

WATER HEATING  
HEATING

RENEWABLES

AIR CONDITIONING

CENTRAL

**STIEBEL ELTRON**  
Technik zum Wohlfühlen

# New instantaneous water heaters 2008



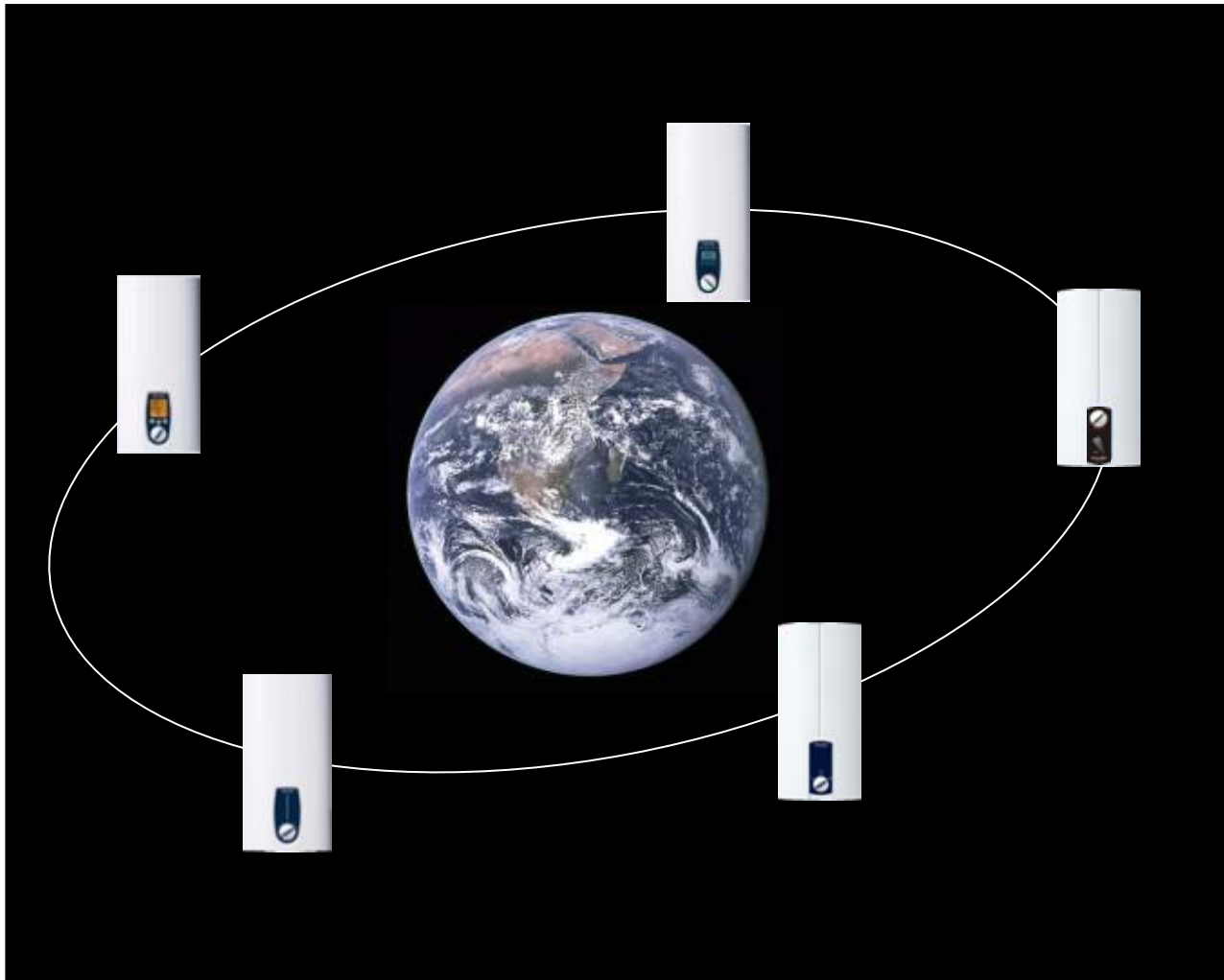
» Kick-off meeting

# MARKET LAUNCH TEAM STE INSTANTANEOUS WATER HEATERS



# STIEBEL ELTRON NEW INSTANTANEOUS WATER HEATERS

**STIEBEL ELTRON**  
Technik zum Wohlfühlen



# MARKETING CONCEPT ENERGY EFFICIENCY WITH ELECTRONICS



- » High energy efficiency with electronic instantaneous water heaters
- » Decentralised is energy efficient
- » Electronic instantaneous water heaters are up to 20% more efficient
- » Energy efficiency for a larger customer base
  - » Now also in the "lower mid range"
- » Energy efficiency in different classes of convenience
- » Completely individual convenience – but absolutely universal efficiency
- » Save up to 20% water and energy

# INSTANTANEOUS WATER HEATERS PRODUCT RANGE 2008

2007



**DHE SL** electronic comfort

- » Comfort display
- » Mini wireless remote control
- » Motorised valve
- » Cu HTE



**DEL SL** electronic LCD

- » Display
- » Regulated
- » Cu HTE



**DHB-E** electronic

- » Sweep
- » Regulated
- » Plastic HTE



**DHB** thermocontrol

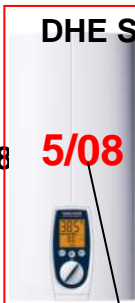
- » 3 stage
- » Shower convenience
- » Switch



**HDB** control

- » 2 stage
- » Plastic HTE

2008



**DHE SL** electronic comfort

- » 18/21/24 selectable
- » Comfort display
- » Mini-FFB
- » Motorised valve
- » Cu HTE

**5/08**



**DEL SL** electronic LCD

- » 18/21/24 selectable
- » Display
- » Regulated
- » Cu HTE

**5/08**



**DHB-E SL** electronic

- » 18/21/24 selectable
- » Scale 1-7
- » regulated
- » Plastic HTE

**4/08**



**DHB ST** thermotronic

- » 3 stage temp. select
- » Symbols
- » Electronic controlled
- » Plastic HTE

**5/08**



**DHH** control

- » 2 stage
- » Plastic HTE

**6/08**



**HDB** control

- » 2 stage
- » Plastic HTE

**First deliveries from:**

**SLi-Versions:**

**8/08**

**8/08**

**8/08**

**9/08**

**9/08**

# FULLY ELECTRONIC INSTANTANEOUS WATER HEATER DHE SL electronic comfort

## The new shower star...

- » Now as standard with 4 keys  
Mini wireless remote control
  - » 18/21/24 kW selectable
  - » 18 kW, 27 kW rated output
  - » Elegant soft-line design
- Accurate delivery of the required temperature through fully electronic control with motorised valve
- » Save water and energy through automatic output matching
  - » Can be installed directly in the shower cubicle



# ELECTRONICALLY REGULATED INSTANTANEOUS WATER HEATER DEL SL electronic LCD

- » Elegant soft-line design
- » 18/21/24 kW selectable output rating
- » 18 kW, 27 kW rated output
- » LCD temperature display
- » Temperature selection 1 °C resolution
- » Pivoting cap for user interface on top
- » Accurate delivery of the required temperature up to the output limit
- » Save water and energy through automatic output matching
- » Can be installed directly in the



# ELECTRONICALLY CONTROLLED INSTANTANEOUS WATER HEATER DHB-E SL electronic

- » Elegant soft-line design
- » 18/21/24 kW selectable output rating
- » 11 kW, 13 kW, 18 kW, 27 kW rated output
- » Variable temperature selection,  
approx. 30-60 °C
- » Required temperature up to the  
output limit
- » Unaffected by pressure fluctuations
- » Water and energy saving through  
automatic output matching
- » Can be installed directly in the  
shower cubicle
- » Bare wire heating system with  
pressure-tested insulation block





# INSTANTANEOUS WATER HEATER DHB-E SL electronic USER INTERFACE

- » Variable temperature selection from approx. 30 °C – 60 °C
- » With scale



# ELECTRONIC INSTANTANEOUS WATER HEATER DHB ST thermotronic

- » Elegant slimline design
- » Three-stage temperature preselection, approx. 35, 45, 55 ° C
- » Individual temperature setting through mixing with cold water
- » Constant DHW temperature up to the output limit
- » Unaffected by pressure fluctuations
- » Save water and energy through automatic output matching
- » Can be installed directly in the shower cubicle
- » Bare wire heating system with pressure-tested insulation block



# ELECTRONIC INSTANTANEOUS WATER HEATER DHB ST thermotronic USER INTERFACE

- » Three-stage temperature preselection, approx. 35, 45, 55 °C
- » Individual temperature setting through mixing with cold water



# HYDRAULIC INSTANTANEOUS WATER HEATER DHH S control

- »The DHH with the right twist
- »Attractive slimline design
- »Output selection in two stages
- »Shower convenience switch for fine tuning the water volume and temperature
- »Can be installed directly in the shower cubicle
- »Bare wire heating system with pressure-tested insulation block
- »For soft and hard water



# DHH S control OPERATING CONVENIENCE



## Shower comfort switch

Variable settings for fine tuning the water volume and temperature

## Output selector

... for demand-dependent matching of the heating output

- » 2 output stages (e.g. DHH 21)
  - • 10.5 / 21 kW: Basin + sink / shower + bath
  - 7 / 17 kW: Basin / shower
- » Demand-dependent / energy saving

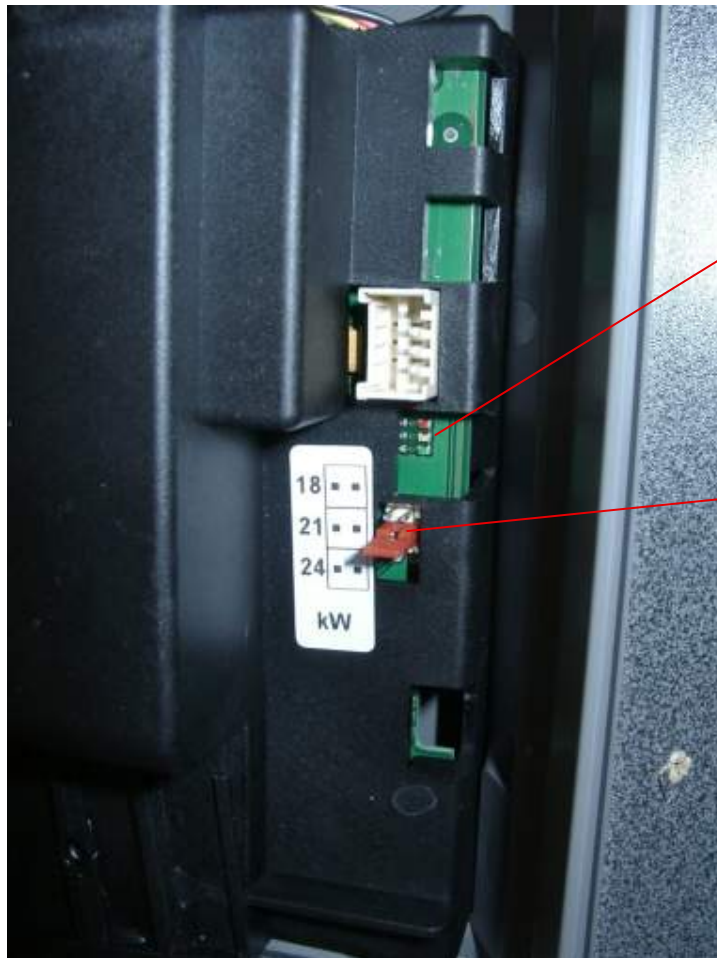
# DHE SL electronic comfort DEL SL electronic LCD OUTPUT SELECTION



Coding card and jumper for output changeover



# DHB-E SL electronic OUTPUT CHANGEOVER



Diagnostic light cluster

Coding card and jumper  
for output changeover

# Heating output can be selected for 95% of installations

Output	kW	18	<b>18/21/24</b>	27
Rated current	A	26	<b>29/31/35</b>	39
Fuse	A	25	<b>32/32/35</b> recommended since 1988	40

**32 A fuse and 4mm<sup>2</sup> cable-cross-section = 21 kW**



# Heating output can be selected

## Why a separate 18 kW version?

- For older systems with 25 A fuses (until 1988)
- **Absolute operational safety has priority!**
- Fuses

Response current =  $I_N * 1.13$

VDE 0298 part 4

Response current =  $25 * 1.13 = 28.25A$

18 / 21 / 24 kW

29 / 31 / 35 A

# Heating output can be selected

## Why not at 27 kW?

- Rated current = 39 A, (however cycling)
- Standard automatic maximum demand relay cycles
  - $I_{AN} = 15 \text{ A}$  ,  $I_{AN} = 13 \text{ A}$ ,  $I_{AN} = 7 \text{ A}$

- **Absolute operational safety has priority!**

# TRADE FAIR PRESENTATION DISPLAY PANEL



4 Live models  
Display  
metered values  
graphics  
Supply  
Conditions  
Water pressure  
Voltage  
2 tapping outlets

# TRADE FAIR PRESENTATION FUNCTION GRAPHICS AND DEVICES

**STIEBEL ELTRON**  
Technik zum Wohlfühlen

## ELEKTRONISCHE DURCHLAUFERHITZER: TEMPERATURREGELUNG MIT GEFÜHL.

STIEBEL ELTRON  
SETZT ZEICHEN  
WWW.STIEBEL-ELTRON.DE

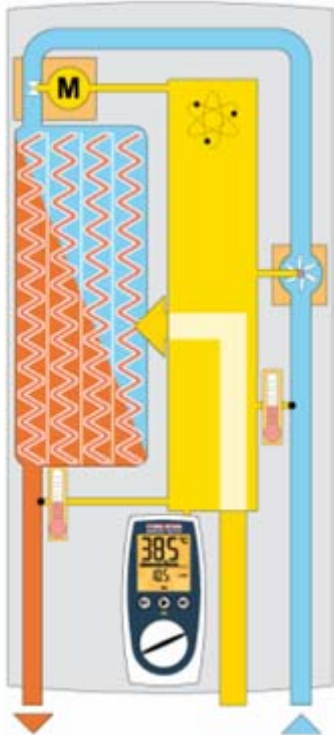


NEU  
NEW



# 4 ELECTRONIC CLASSES OF CONVENIENCE FUNCTIONS AND BENEFITS

**DHE SL electronic comfort**

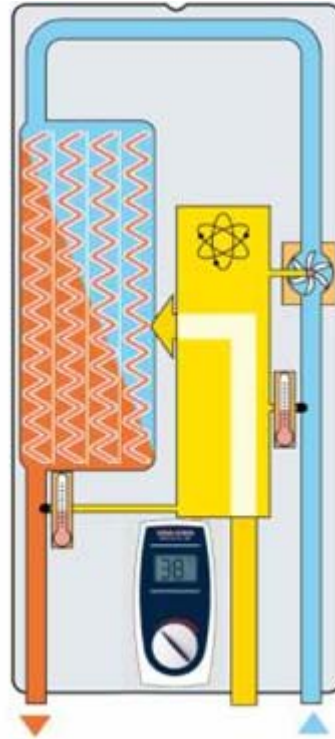


- Fully electronically controlled**  
instantaneous water heater
- » Cold water sensor
  - » Flow rate sensor
  - » DHW sensor
  - » Variable automatic output matching

» **Motorised valve** for water volume control

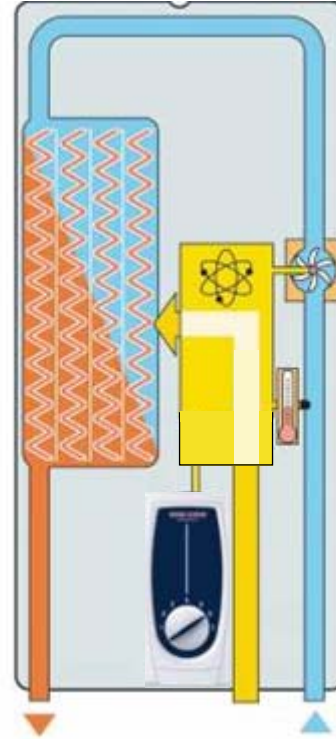
» Bare wire heating system

**DEL SL electronic LCD**



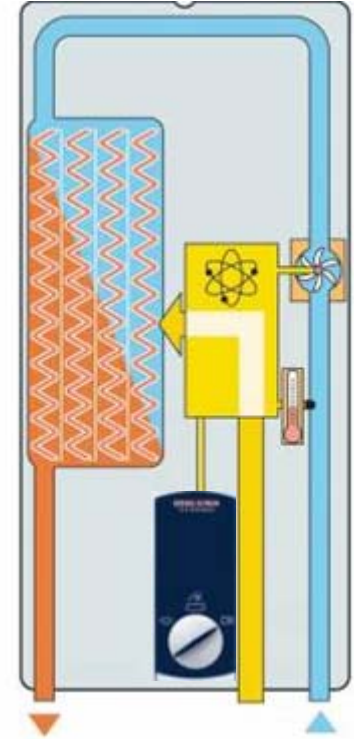
- Electronically controlled**  
instantaneous water heater
- » Cold water sensor
  - » Flow rate sensor
  - » DHW sensor
  - » Variable automatic output matching
  - » Bare wire heating system

**DHB-E SL electronic**



- Electronically controlled**  
instantaneous water heater
- » Cold water sensor
  - » Flow rate sensor
  - » Variable automatic output matching
  - » Bare wire heating system

**DHB ST thermotronic**



- Electronic** instantaneous water heater
- » Cold water sensor
  - » Flow rate sensor
  - » Automatic output matching
  - » Bare wire heating system

# MARKET LEADING TEAM STIEBEL ELTRON

## INSTANTANEOUS WATER HEATERS

### 4 ELECTRONIC CLASSES OF CONVENIENCE

### FUNCTIONS AND BENEFITS

#### **DHE SL** electronic comfort

##### **DHW temperature**

- » Accurate delivery of the required temperature
- » Fully electronically controlled heating output and water volume

##### **Constant temperature**

- » Complete compensation for pressure variations, inlet temperature changes and voltage fluctuations
- » Automatic volume matching to output limit

##### **Water volume presentation**

- » Automatic output matching
- » Automatic water volume control
- » Save water and energy

##### **Operating convenience**

- » Variable digital temperature selection 20...60 °C
- » 0.5 °C resolution for temperature selection
- » Quick temperature selection with two memory keys
- » Multifunction display with backlighting
- » Mini wireless remote control with 4 keys for temperature setting

#### **DEL SL** electronic LCD

##### **DHW temperature**

- » Accurate delivery of the required temperature
- » Electronically controlled heating output

##### **Constant temperature**

- » Complete compensation for pressure variations, inlet temperature changes and voltage fluctuations up to the output limit

##### **Water volume presentation**

- » Automatic output matching
- » Save water and energy

##### **Operating convenience**

- » Variable digital temperature selection 30...60 °C
- » 1 °C resolution for temperature selection
- » LCD display

#### **DHB-E SL** electronic

##### **DHW temperature**

- » Required temperature through electronically controlled heating output

##### **Constant temperature**

- » Compensation for pressure variations and inlet temperature changes up to the output limit

##### **Water volume presentation**

- » Automatic output matching
- » Save water and energy

##### **Operating convenience**

- » Variable temperature selection approx. 30...60 °C
- » Temperature scale 1...7

#### **DHB ST** thermotronic

##### **DHW temperature**

- » Required temperature through electronically controlled heating output

##### **Constant temperature**

- » Extensive compensation for pressure variations and inlet temperature changes up to the output limit

##### **Water volume presentation**

- » Automatic output matching
- » Save water and energy

##### **Operating convenience**

- » Three-stage temperature selection, approx. 35, 45, 55 °C

# MARKET LEADING TEAM STYLE INSTANTANEOUS WATER HEATERS 4 ELECTRONIC CLASSES OF CONVENIENCE FUNCTIONS AND BENEFITS



## **DHE SL** electronic comfort

### **Additional functions**

- » Undersink operating convenience
- » Air detection with differential analysis system for even greater operational reliability and longer service life
- » Anti-scalding protection, electronically adjustable
- » ECO function, spa showers, energy counter, time
- » Comfort cable remote control (option)
- » Comfort wireless remote control (option)

### **Profi Rapid® installation system**

- » Profi Rapid® installation system for quicker installation
- » Optional adjustable rated output with the DHE 18/21/24 SL
- » DHE 18 SL 25 A for older systems with 25 A fuse protection

## **DEL SL** electronic LCD

### **Additional functions**

- » Undersink operating convenience
- » Air detection with differential analysis system for even greater operational reliability and longer service life
- » 43 °C anti-scalding protection
- » Comfort wireless remote control (option)

### **Profi Rapid® installation system**

- » Profi Rapid® installation system for quicker installation
- » Optional adjustable rated output with the DEL 18/21/24 SL
- » DEL 18 SL 25 A for older systems with 25 A fuse protection

## **DHB-E SL** electronic

### **Additional functions**

- » Undersink operating convenience
- » Air detection with differential analysis system for even greater operational reliability and longer service life

### **Profi Rapid® installation system**

- » Profi Rapid® installation system for quicker installation
- » Optional adjustable rated output with the DHB-E 18/21/24 SL
- » DHB-E 18 SL 25 A for older systems with 25 A fuse protection

## **DHB ST** thermotronic

### **Additional functions**

- » Undersink operating convenience
- » With electronic air detection

### **Profi Rapid® installation system**

- » Profi Rapid® installation system for quicker installation

# ALL SYSTEMS GO FOR THE NEW RANGE

